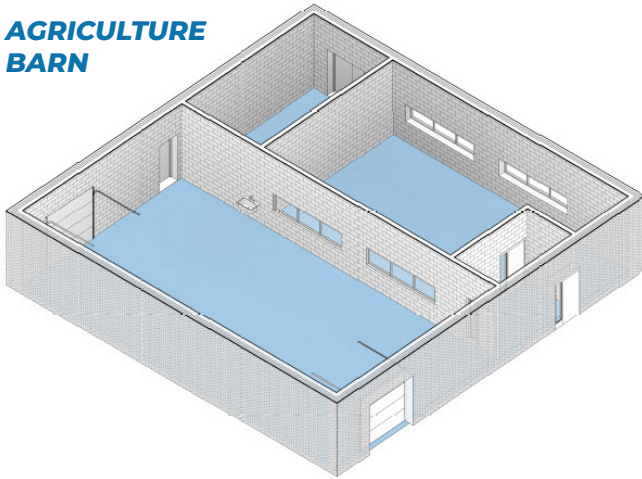




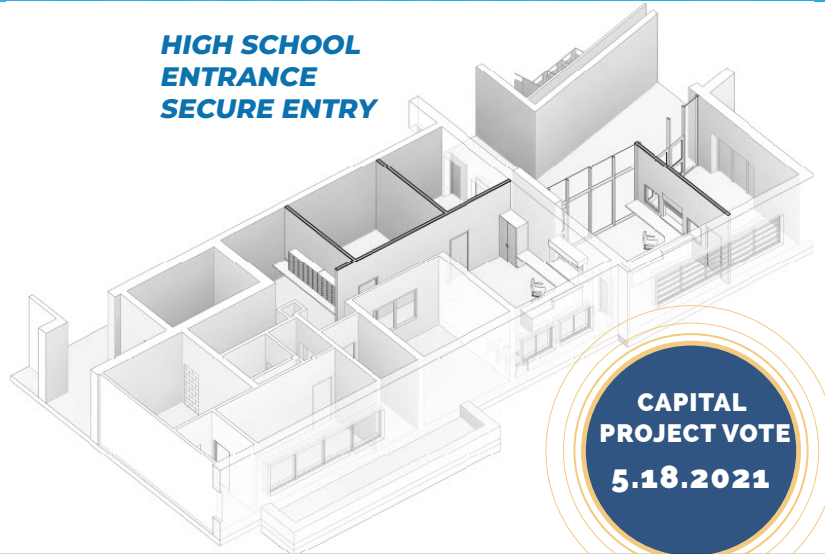
# Cattaraugus-Little Valley Central School

*Constructing foundations of pride, Living into wellness, Striving for excellence*

**AGRICULTURE BARN**



**HIGH SCHOOL ENTRANCE SECURE ENTRY**



**CAPITAL PROJECT VOTE**  
**5.18.2021**

The Cattaraugus-Little Valley CSD is asking for your support for a capital improvements project. On **May 18th, 2021**, you will have an opportunity to show your support for our District and vote on an \$18,500,000 capital improvements project. Districts must conduct a building condition survey every five years assessing the current conditions of the structure and operating systems of their facilities. The proposed capital project is designed to address health, safety, accessibility, and code compliance measures identified in the building condition survey. The capital project will also support UPK - 12th grade instructional and programming needs. CLV will support the project through state aid and an established capital reserve fund. The proposed project is tax neutral with no additional tax impact on the residents of the district.

**Dr. Sharon Huff**  
Superintendent of Schools

## THE \$18,500,000 CAPITAL IMPROVEMENTS PROJECT SCOPE OF WORK:

### ELEMENTARY SCHOOL

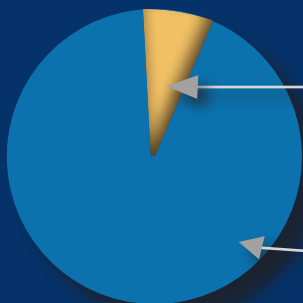
- Renovations to Nurse's office for health, safety and code compliance.
- Safety enhancements including secure entrance.
- Office renovations.
- Infrastructure repairs to windows and masonry.
- Replacement of 1991 HVAC and controls.
- Replacement of fire alarm system.
- Renovations to locker room and OT/PT space renovations.

### MIDDLE SCHOOL/HIGH SCHOOL

- Infrastructure repairs to roofing, masonry, stairs, concrete sidewalks and concrete entrance.
- Mitigation of playfield drainage issues.
- Fire hydrant replacement.
- Safety enhancements including secure entrance.
- Renovations to main office, library and district office.
- Renovations to bathrooms.
- Program expansion for agricultural barn, pasture, addition of STEAM space and possible relocation of fitness center.

### TRANSPORTATION FACILITY

- New water service, from existing water to Village water.
- Installation of electric door operators.
- Pavement repairs.
- Insulated metal panel roof system upgrades.



LOCAL SHARE/CAPITAL RESERVE FUND

**9.3%**

PROJECT AID

**90.7%**

The project is tax neutral with **no additional tax impact!**



## FREQUENTLY ASKED QUESTIONS:

### **Q. Why is the District having a capital project vote?**

The District is committed to providing a safe learning environment and properly maintained facilities for our students and public to use. Routine facility maintenance and repair work is typically funded within the annual budget with local tax payers bearing the full cost. Large renovations or replacement of “end of useful life” items, such as those included in this project, would have an adverse impact on the annual budget and tax rate. In a capital project, the State reimburses the Cattaraugus-Little Valley Central School District approximately 90.7% of the construction costs that would otherwise fall upon local taxpayers.

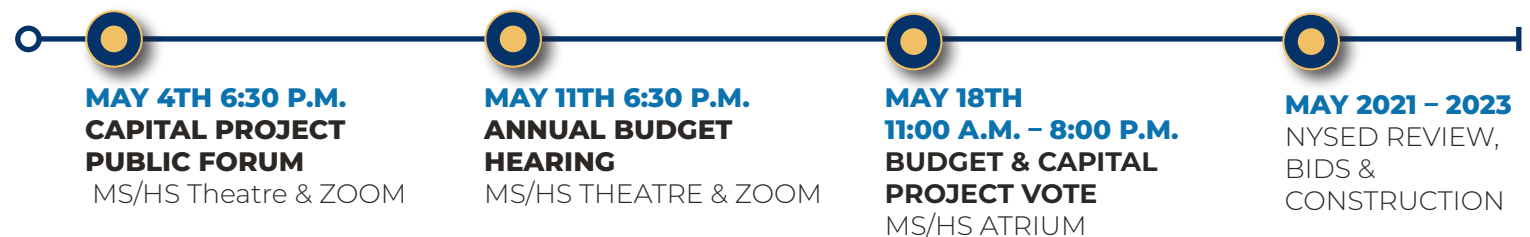
### **Q. Why is this work needed?**

Just like your house, with age comes needed repairs to keep the structure in good shape. The schools’ roofs, windows, heating systems and public address systems are at a point in their life span where continual cost to repair and maintain these pieces is becoming a financial burden for the District. The District’s last capital project was in 2007. Taking good care of the most important asset our community owns is important. Much of the work being done in this project includes cost saving energy upgrades and critical facilities improvements to address state mandated health and safety requirements. The District is addressing these issues now rather than delaying, facing further deterioration and higher annual maintenance budgets to keep them operational.

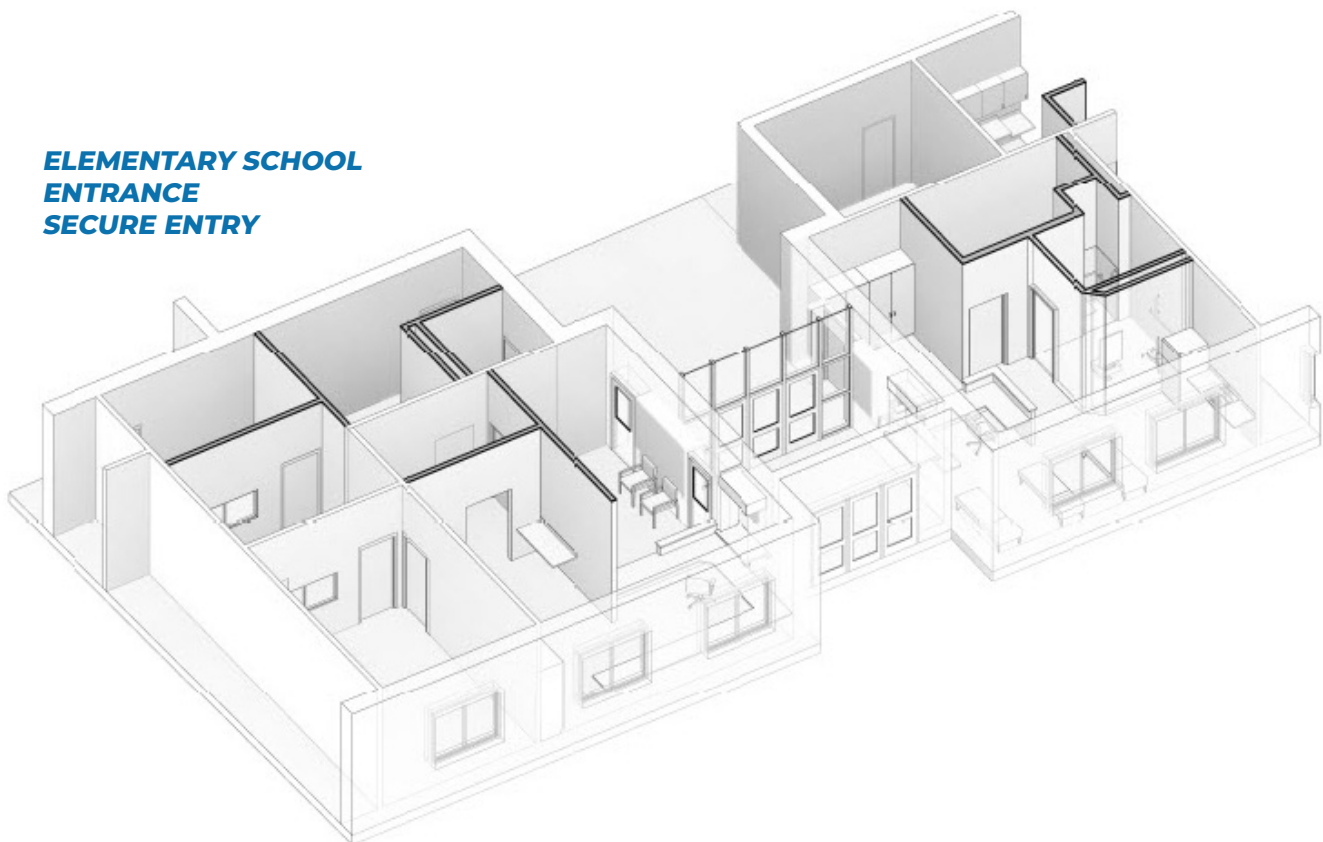
### **Q. When and where will the vote be held?**

The capital project vote will be held on **Tuesday, May 18th, 2021, from 11:00 A.M. to 8:00 P.M.** in the MS/HS Atrium.

## OVERVIEW OF SCHEDULE



**ELEMENTARY SCHOOL  
ENTRANCE  
SECURE ENTRY**



Join us at the MS/HS Atrium on May 18th from 11 A.M. to 8:00 P.M. to cast your vote.